

## FSR-2 Series Medical Foot Switches (IPX8, Rocker Style)

### Features

- Rocker arm foot switch
- Zinc metal die cast body
- High mechanical stability

### Specifications

Operating Frequency	60 ops/min
Insulation Resistance	>100MΩ@500V DC
Contact Resistance	<25mΩ (initial)
Rated Current/Voltage	10A/15A 1/2HP 250VAC
Inrush Current	Complies with IEC947-5-1: AC15/DC13
Dielectric Strength	1000VAC for 1 min between current carrying parts 2500VAC for 1 min between non-current carrying parts
Service Life	Mechanically 1 x 10 <sup>6</sup> (operations) Electrically 5 x 10 <sup>5</sup> (operations)
Operating Temperature	-30~+80°C (-22~176°F)
Degree of Protection	IPX8(NEMA 4, 4X, 6, 6P)

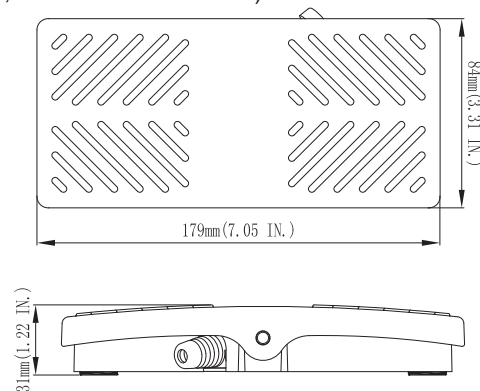
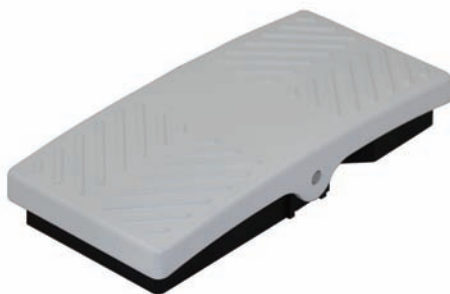
### Selection Guide:

FSR - 21 - 10W -		T - 8 - F - 22/5S	
IP Rating		Options	Cable Length
21: Single Pedal		Additional Wiring Information	
22: Double Pedal		22AWGx5 Shielded	
23: Three Pedal		Blank: Meter(s)	
10W: IPX8		Blank: SPDT	
		T: DPDT(2NO/2NC)	
		F: Foot/Feet	

### Dimensions:

**FSR-21-10W-2-20/4S** (20AWGx4, shielded, 2 meters, 2x 1NO, cable diameter 7.0mm)

**FSR-21-10W-T-2-22/5S** (22AWGx5, shielded, 2 meters, 2x 1NO, cable diameter 5.6mm)



**FSR-23-10W-2-20/4S** (20AWGx4, shielded, 2 meters, 2x 1NO, cable diameter 7.0mm)

**FSR-23-10W-T-2-22/5S** (22AWGx5, shielded, 2 meters, 2x 1NO, cable diameter 5.6mm)

