

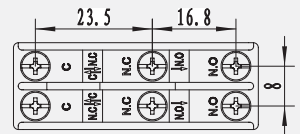
## Micro switches controlled by two separate circuits ZD-10 series

### Specifications

Operating Speed	0.01mm-1m/sec
Operating Frequency	Mechanical: 240ops/min Electrical: 20 ops/min
Insulation Resistance	>100MΩ@500V DC
Contact Resistance	<15mΩ
Rated Current/Voltage	10A 1/2HP 125/250VAC, 2A 480VAC, 0.5A 125VDC, 0.25A 250VDC
Dielectric Strength	1000VAC for 1 min between current carrying parts 1500VAC for 1 min between non-current carrying parts
Service Life	Mechanically 1.0 x 10 <sup>6</sup> (operations) Electrically 5 x 10 <sup>5</sup> (operations)
Operating Temperature	-25~+80°C (-13~176°F)
Humidity	35%~85%RH
Degree of Protection	IP00

### Definitions of Operating Characteristics

OF Operating Force	PT Pretravel
RF Releasing Force	MD Movement Differential
OT Overtravel	OP Operating Position
TT Total Travel	PO Travel to Positive Opening

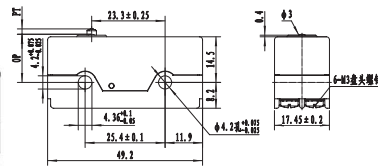


### Ratings

Series connection	Item	Non-inductive load (A)				Inductive load (A)			
		Resistive load		Bulb load		Inductive load		Motor load	
		NC	NO	NC	NO	NC	NO	NC	NO
AC125/250	Rate Voltage	10	4	2	6	5	2.5		
		10	2.5	1.5	6	3	1.5		
DC 30/125/250	Rate Voltage	10	4	2	6	6	3		
		1	1	1	0.1	0.1	0.1		
Parallel connection	Rate Voltage	6	3	1.5	4	4	2		
		6	2.5	1.25	4	2	1		
DC 30/125/250	Rate Voltage	6	4	2	4	6	3		
		0.6	0.6	0.6	0.1	0.1	0.1		
DC 30/125/250	Rate Voltage	0.3	0.3	0.3	0.05	0.05	0.05		

### Dimensions Unit: mm

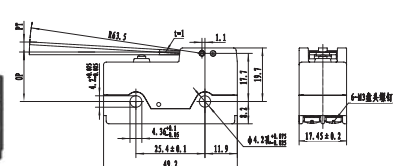
#### ZD-10G



#### Operating Characteristics

- OF<sub>max</sub> 5.59N
- RF<sub>min</sub> 0.56N
- PT<sub>max</sub> 1.7mm
- OT<sub>min</sub> 0.13mm
- MD<sub>max</sub> 0.4mm
- OP 15.6±0.4mm

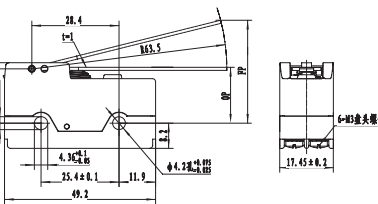
#### ZD-10GV



#### Operating Characteristics

- OF<sub>max</sub> 1.96N
- RF<sub>min</sub> 0.13N
- PT<sub>max</sub> 6mm
- OT<sub>min</sub> 0.4mm
- MD<sub>max</sub> 1.7mm
- OP 18.3±1mm

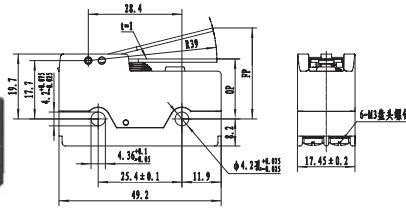
#### ZD-10GW



#### Operating Characteristics

- OF<sub>max</sub> 1.67N
- RF<sub>min</sub> 0.27N
- OT<sub>min</sub> 1.6mm
- MD<sub>max</sub> 4mm
- OP 18.3±1mm
- FP<sub>max</sub> 34mm

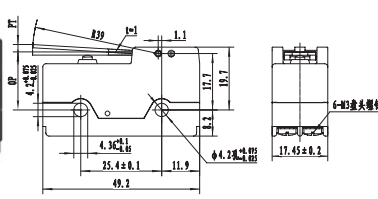
#### ZD-10GW1



#### Operating Characteristics

- OF<sub>max</sub> 2.7N
- RF<sub>min</sub> 0.65N
- OT<sub>min</sub> 1.6mm
- MD<sub>max</sub> 4mm
- OP 18.3±1mm
- FP<sub>max</sub> 28mm

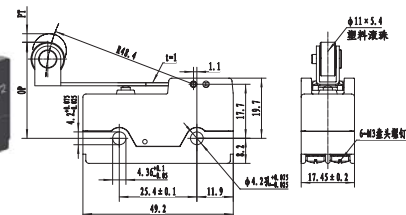
#### ZD-10GV1



#### Operating Characteristics

- OF<sub>max</sub> 3N
- RF<sub>min</sub> 0.45N
- OT<sub>min</sub> 0.4mm
- MD<sub>max</sub> 1.2mm
- OP 18.3±1mm
- PT<sub>max</sub> 4mm

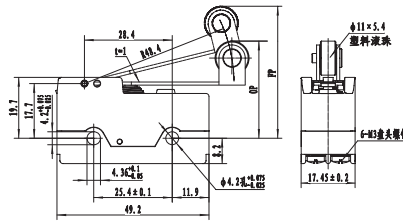
#### ZD-10GV2



#### Operating Characteristics

- OF<sub>max</sub> 2.65N
- RF<sub>min</sub> 0.33N
- OT<sub>min</sub> 0.26mm
- MD<sub>max</sub> 1.1mm
- OP 29.4±0.8mm
- PT<sub>max</sub> 4mm

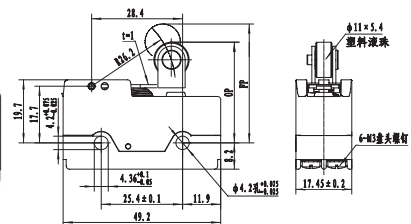
## Micro switches controlled by two separate circuits ZD-10 series



### ZD-10GW2

#### Operating Characteristics

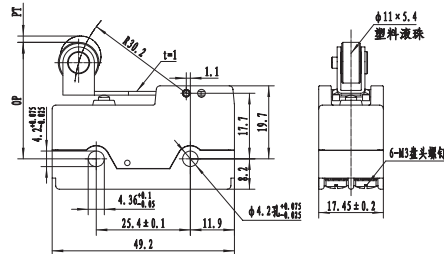
- OF<sub>max</sub> 2.09N
- RF<sub>min</sub> 0.41N
- OT<sub>min</sub> 1.2mm
- FP<sub>max</sub> 45mm
- MD<sub>max</sub> 3.3mm
- OP 31.8±0.8mm



### ZD-10GV22

#### Operating Characteristics

- OF<sub>max</sub> 3.92N
- RF<sub>min</sub> 0.839N
- OT<sub>min</sub> 0.9mm
- FP<sub>max</sub> 39.7mm
- MD<sub>max</sub> 2.4mm
- OP 30.2±0.8mm



### ZD-10GV22

#### Operating Characteristics

- OF<sub>max</sub> 4.22N
- RF<sub>min</sub> 0.41N
- PT<sub>max</sub> 3mm
- OT<sub>min</sub> 0.13mm
- MD<sub>max</sub> 0.6mm
- OP 29.4±0.8mm